



# MONTHLY MEMBERSHIP PROGRESS REPORT

District 5M 6

Results as of: 04/30/2019

GMT: OPEN

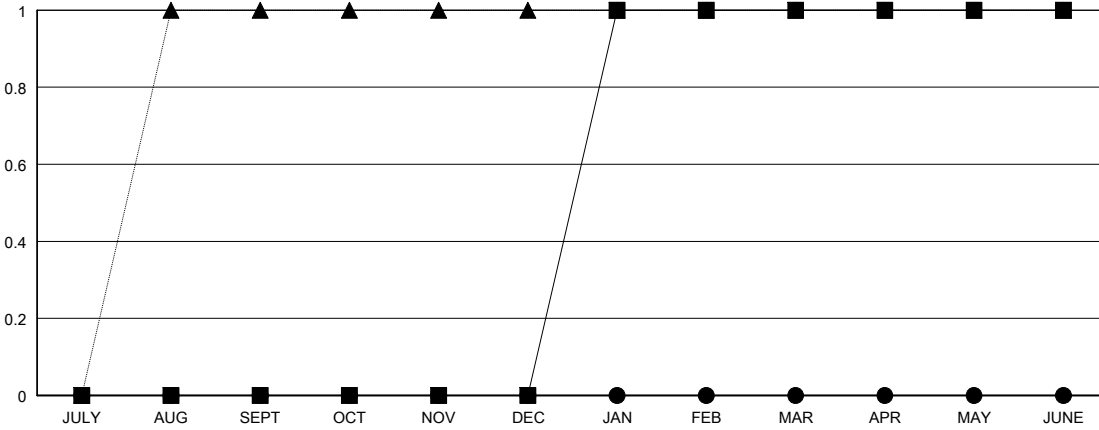
LOCATION MINNESOTA

GMT CA

Clubs			
RESULTS FOR 2018-2019			
QUARTER	NEW CLUB GOAL	NEW CLUBS	DROPPED CLUBS
JULY/AUG/SEPT	0	0	0
OCT/NOV/DEC	0	0	0
JAN/FEB/MAR	1	0	1
APR/MAY/JUNE	0	0	0

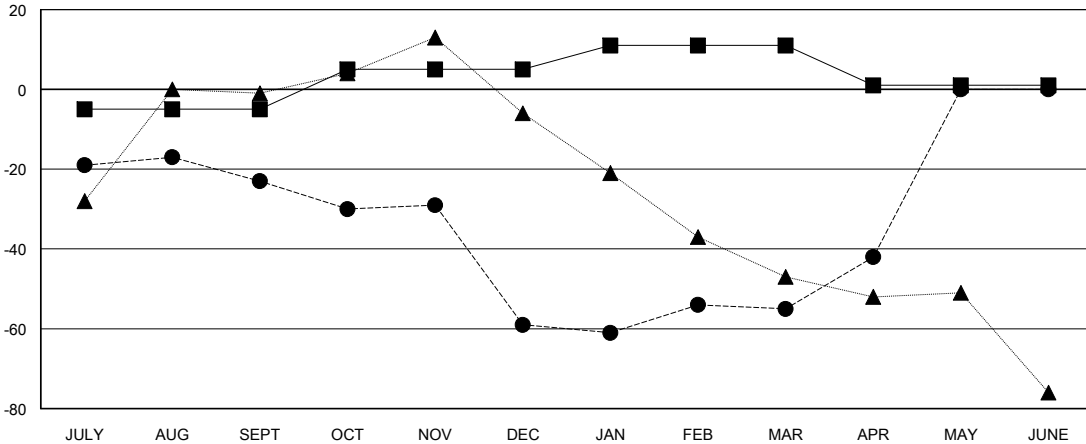
Members			
RESULTS FOR 2018-2019			
QUARTER	MEMBER GROWTH NET GOAL	MEMBER GROWTH ACTUAL	DROPPED MEMBERS ACTUAL (including transfers)
JULY/AUG/SEPT	-5	26	45
OCT/NOV/DEC	10	54	65
JAN/FEB/MAR	6	40	31
APR/MAY/JUNE	-10	23	7

GOALS AND ACTUAL NEW CLUBS CUMULATIVE



- - CURRENT YEAR GOALS FOR NEW CLUBS
- - CURRENT YEAR ACTUAL NEW CLUBS
- ▲ - LAST YEAR ACTUAL NEW CLUBS

GOALS AND ACTUAL MEMBERS CUMULATIVE



- - MEMBER GROWTH NET GOAL
- - MEMBER GROWTH ACTUAL
- ▲ - LAST YEAR MEMBERSHIP ACTUAL

DROPPED CLUBS: 1
------------------

29 CLUBS OF 36 ADDED 1 OR MORE NEW MEMBERS
--

GENDER DISTRIBUTION	
MALE	936 (66.62%)
FEMALE	469 (33.38%)
Women Percentage Fiscal Year Goal: 32%	

DROPPED MEMBERS	
DECEASED	17
CLUB CANCELLED	0
OTHER	131
<b>TOTAL</b>	<b>148</b>

[CLICK HERE FOR CUMULATIVE MEMBERSHIP DATA](#)

TOTAL FAMILY UNIT MEMBERS	312
FAMILY MEMBERS PAYING HALF DUES	156